

## GC31 Cellular Gateway

### Connect Any Verkada Device, Anywhere



### Overview

The GC31 and GC31-E Cellular Gateways make it simple to deploy Verkada products anywhere with power and cell signal, including hard-to-wire locations such as parking lots, construction sites, or streetlight poles.

Simply feed the GC31 any power input and it will send both power and data to any Verkada device via PoE. Like all Verkada products, the GC31 is cloud-managed and natively integrates with other devices in our ecosystem. And with Verkada’s unlimited data plan, which works out-of-the-box in many countries throughout the world, customers no longer need to work with cell carriers.

### Key features

#### Flexible power options

Use any power input, including terminal block, barrel jack, and PoE. The gateway has two PoE outputs that provide up to 60W total.

#### Verkada data plan or BYO plan

Eliminate complexity with the Verkada data plan or bring your own plan. The Verkada plan offers truly unlimited data, multi-carrier redundancy, and 24/7 support.

#### Deploy anywhere

The GC31 comes in both indoor and outdoor versions that cover almost any environment and installation scenario, including pole, roof, wall, and tabletop.

#### Cloud-managed

Set up and manage the GC31 in Verkada Command from any device and any location. See all your gateways on a map, run diagnostics, and receive alerts if connectivity is lost.

#### Remote troubleshooting

Remotely power cycle the GC31 and any connected devices via Command. If the gateway itself is offline, it will automatically power cycle itself after 30 minutes.

#### Optimized data usage

The GC31 optimizes streaming, cloud backup, and other activities on downstream Verkada devices to reduce data usage and improve the viewing experience.



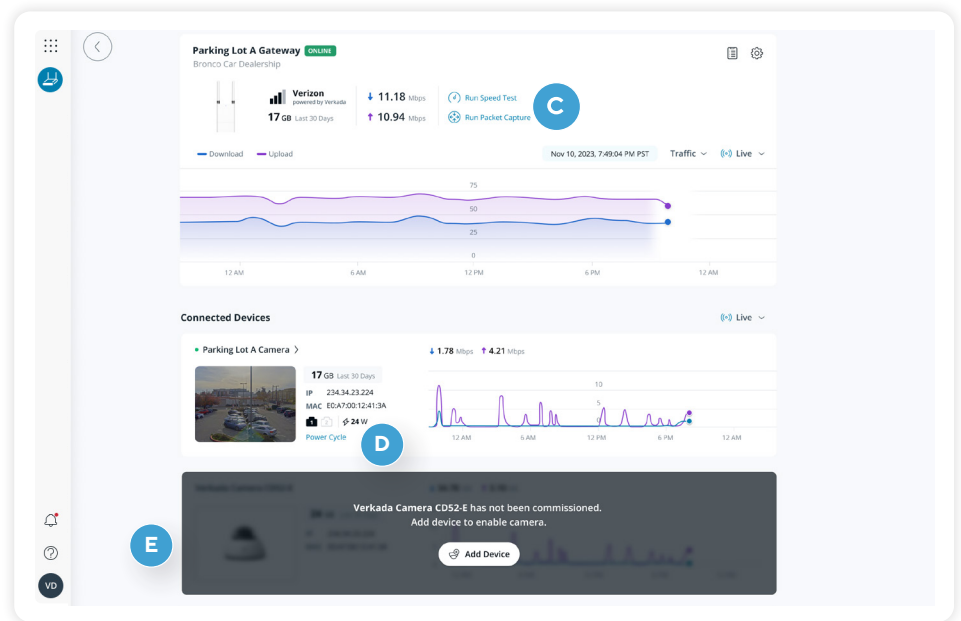
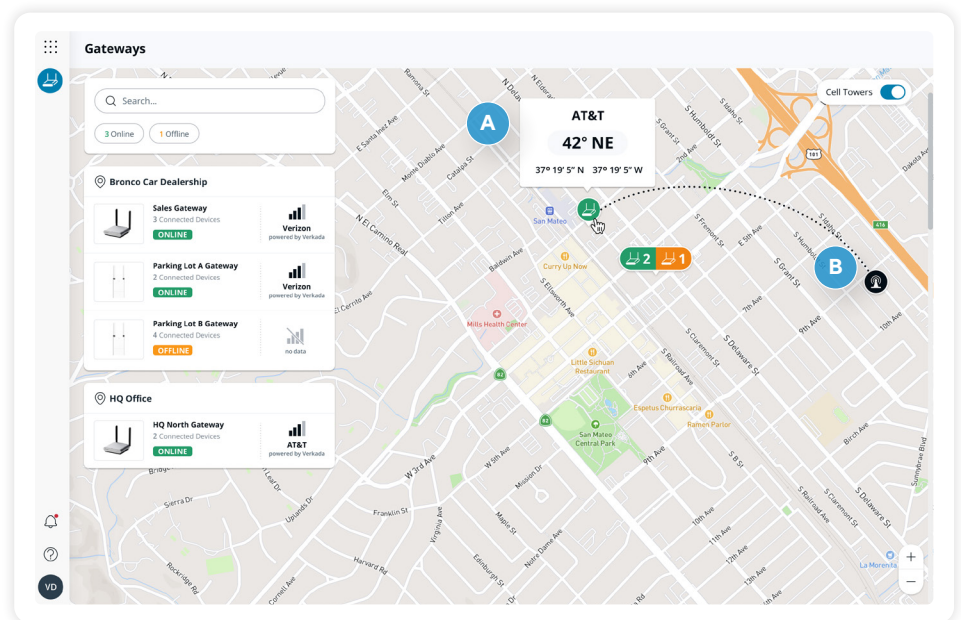
### Deploy anywhere

The Verkada Cellular Gateway comes in both indoor and outdoor versions that cover a wide range of installation scenarios. The GC31-E outdoor model is IP66 rated and can be easily mounted on a pole, wall or roof. The GC31 indoor model can be wall mounted or secured on a tabletop using the Kensington lock.



### Manage from anywhere

- A. View the status and GPS location of your gateways
- B. See which cell tower each gateway is using
- C. Remotely run packet capture and speed tests
- D. Remotely power cycle devices
- E. Recognize connected Verkada devices and streamline setup





# Verkada Data Plan

Verkada takes away the challenge of working with cell carriers with our hassle-free data plan, which works out of the box in many countries across the world.

## Key benefits

### Instant connectivity out of the box

As soon as it receives power, the GC31 will automatically connect to a carrier using the pre-inserted Verkada SIM card – it just works.

### Unlimited data

Unlike most carriers, which throttle your speed after a certain threshold, Verkada offers truly unlimited data.

### Global coverage

The table below shows which carriers we currently use in each country that we support. In the US, the Verkada SIM will default to Verizon and failover to AT&T or T-Mobile if needed.

Country/region	Carriers used
US	Verizon, AT&T, T-Mobile
Canada	Telus
UK	Three, O2
Australia	Optus, Telstra
European Union	<a href="#">See full list</a>

## How it works

The base cloud license for the GC31 already includes unlimited data for Verkada non-video devices, such as access controllers or sensors. Unlimited data for Verkada video devices, such as cameras or intercoms, can be purchased through an add-on data license. Please see Ordering Information at the end of this document for pricing.

Note: Cloud backup is disabled on devices that use the Verkada data plan. Customers can enable cloud backup if they bring their own data plan. For more details, please refer to this [knowledge base article](#).

# Bring Your Own Data Plan

Customers also have the option to bring their own data plan. The GC31 is compatible with SIM cards from virtually all major carriers in most countries throughout the world. For a list of carriers that have been tested and verified by Verkada, please refer to this [knowledge base article](#).

### Always connected

Customers can insert their own SIM card in one slot while keeping the Verkada SIM in the other slot for automatic failover. If the customer-provided SIM fails, the Verkada SIM helps ensure that the gateway is always reachable.

### Flexible configuration

Customers may also use their own SIM cards in both slots. In this case, customers can configure one slot as the primary SIM and use the other for automatic failover if needed.



# GC31

## Tech Specs



### GC31 Indoor Cellular Gateway

#### Cellular

<b>Connectivity</b>	LTE cellular CAT 12	<b>MIMO</b>	2x2 DL MIMO
<b>SIM</b>	2 SIM slots (Nano 4FF) Dual SIM/auto SIM failover	<b>Bands</b>	B1, B2, B3, B4, B5, B7, B8, B12, B13, B14, B17, B18, B19, B20, B25, B26, B28, B29, B30, B38, B39, B40, B41, B42, B43, B48 (CBRS), B66, B71
<b>Antennas</b>	2 x SMA		

#### Inputs and outputs

<b>Ethernet</b>	2 x GigE RJ45 outputs	<b>Power Output</b>	2 x PoE RJ45 outputs @ 60W total (2 x IEEE 802.3at Type 2 PoE+ 30W or 1 x IEEE 802.3bt Type 3 PoE++ 60W)
<b>Power Input</b>	54VDC Barrel Jack (6.5/3.5mm OD/ID) 100-240VAC AC/DC Power Adapter included (region specific)	<b>GNSS/GPS</b>	Passive GNSS (GPS, GLONASS, and Galileo)

#### Compliance and certifications

<b>RF &amp; EMC</b>	FCC, IC (for CA), CE (for EU)	<b>Cellular<sup>1</sup></b>	PTCRB, GCF, Verizon, T-Mobile, AT&T, FirstNet
<b>Safety</b>	UL/IEC 62368-1, CSA C22.2 No. 62368-1		

#### General

<b>Operating Temperature</b>	-10°C to 50°C / 14°F to 122°F	<b>Weight</b>	0.6kg / 1.3lbs
<b>Humidity</b>	5-90% RH non-condensing	<b>LEDs</b>	1 status LED, 2 SIM indicator LEDs, 4 signal strength LEDs
<b>Mounting Options</b>	Wall mount or tabletop (with Kensington slot)	<b>Warranty</b>	10 years
<b>Dimensions</b>	Main Unit: L: 125mm / 4.9in W: 125mm / 4.9in H: 30mm / 1.2in Antenna: L: 20mm / 0.8in W: 10mm / 0.4in H: 136mm / 5.4in	<b>Included Accessories</b>	2 x SMA antennas, AC/DC power adapter and cord, mount plate, 4 x wall anchors, T10 security torx screwdriver, 4 M4 x 25mm PH2 wall screws, RJ45 port cover

1. Cellular carriers and operators throughout the world may only require telecom industry certifications such as PTCRB to operate on their network. Some carriers require additional testing and approval, beyond telecom certifications. A carrier listed in the approvals section means Verkada completed additional testing and acquired technical approval for that given carrier. Any carrier not listed may not require additional testing or approval beyond telecom industry certifications to operate on their network.



## GC31 Indoor Cellular Gateway Inputs and Outputs





# GC31-E

## Tech Specs



### GC31-E Outdoor Cellular Gateway

#### Cellular

<b>Connectivity</b>	LTE cellular CAT 12	<b>MIMO</b>	2x2 DL MIMO
<b>SIM</b>	2 SIM slots (Nano 4FF) Dual SIM/auto SIM failover	<b>Bands</b>	B1, B2, B3, B4, B5, B7, B8, B12, B13, B14, B17, B18, B19, B20, B25, B26, B28, B29, B30, B38, B39, B40, B41, B42, B43, B48 (CBRS), B66, B71
<b>Antennas</b>	2 x N Type		

#### Inputs and outputs

<b>Ethernet</b>	1 x GigE RJ45 input 2 x GigE RJ45 outputs	<b>Power Output</b>	2 x PoE RJ45 outputs @ 60W total (2 x IEEE 802.3at Type 2 PoE+ 30W or 1 x IEEE 802.3bt Type 3 PoE+ 60W)
<b>Power Input</b>	54VDC Barrel Jack (6.5/3mm OD/ID) IEEE 802.3bt Type 4 PoE+ 90W 12-36VDC Terminal Block	<b>GNSS/GPS</b>	Passive GNSS (GPS, GLONASS, and Galileo)

#### Compliance and certifications

<b>RF &amp; EMC</b>	FCC, IC (for CA), CE (for EU)	<b>Cellular<sup>1</sup></b>	PTCRB, GCF, Verizon, T-Mobile, AT&T, FirstNet
<b>Safety</b>	UL/IEC 62368-1, CSA C22.2 No. 62368-1	<b>Weather Rating</b>	IP66

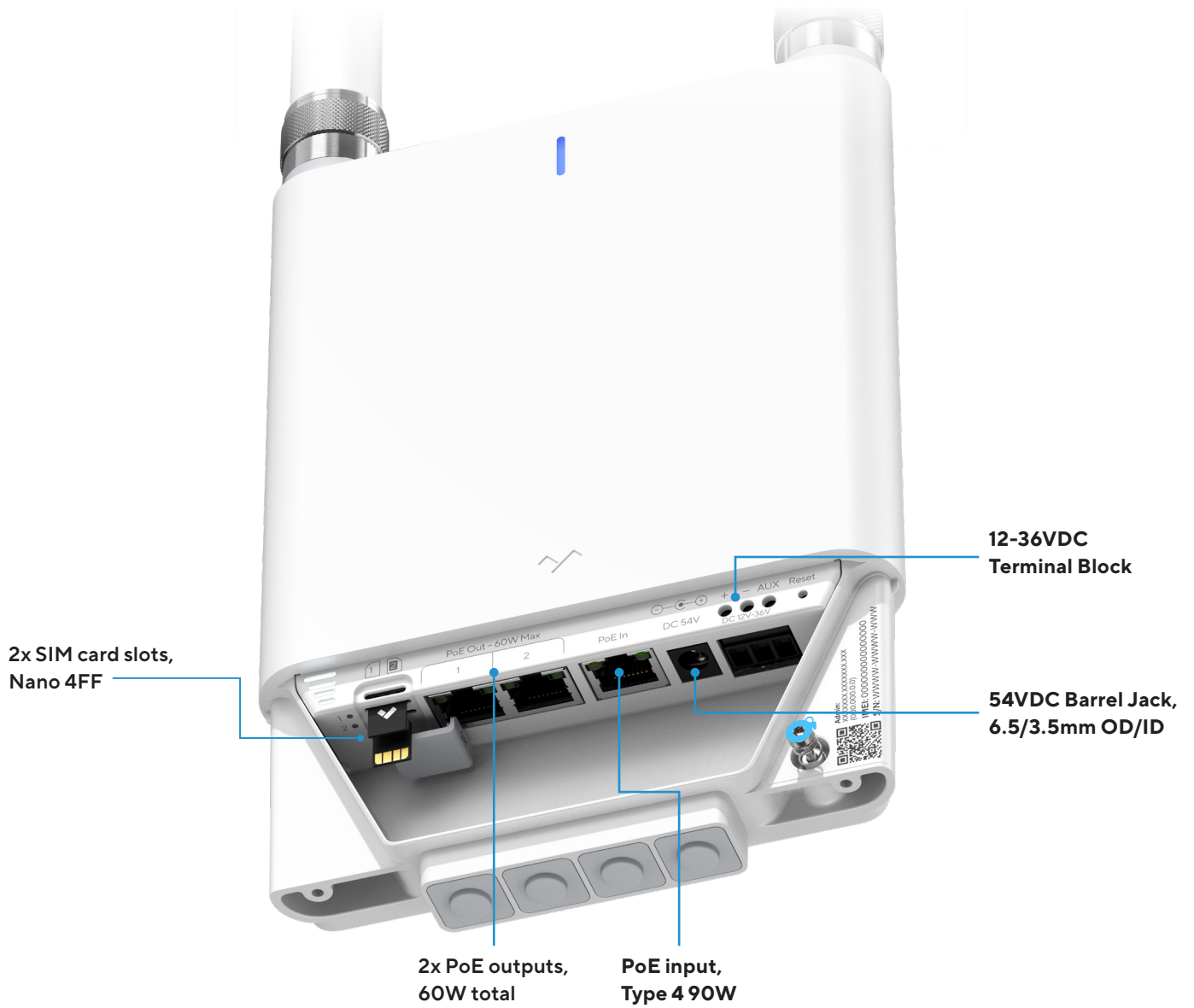
#### General

<b>Operating Temperature</b>	-40°C to 50°C / -40°F to 122°F	<b>Weight</b>	1.4kg / 3.0lbs
<b>Humidity</b>	5-90% RH non-condensing	<b>LEDs</b>	1 status LED, 2 SIM indicator LEDs, 4 signal strength LEDs
<b>Mounting Options</b>	Wall or pole mount	<b>Warranty</b>	10 years
<b>Dimensions</b>	Main Unit: L: 243mm / 9.6in W: 148mm / 5.9in H: 33mm / 1.3in	Antenna: Ø: 25mm / 1.0in L: 179mm / 7.1in	<b>Included Accessories</b> 2 x N type antennas, mount plate, 2 x pole straps, 4 x wall anchors, 4 x wall screws, T10 security torx screwdriver, 4 x 7-9 mm cable grommets, 1 x 3-5mm cable grommet, 1 x 3-wire cable grommet

1. Cellular carriers and operators throughout the world may only require telecom industry certifications such as PTCRB to operate on their network. Some carriers require additional testing and approval, beyond telecom certifications. A carrier listed in the approvals section means Verkada completed additional testing and acquired technical approval for that given carrier. Any carrier not listed may not require additional testing or approval beyond telecom industry certifications to operate on their network.



# GC31 Outdoor Cellular Gateway Inputs and Outputs





## Accessories

The GC31 Indoor Cellular Gateway comes with an AC/DC power adapter with a regionalized plug.

The GC31-E Outdoor Cellular Gateway has multiple power inputs and thus does not include power accessories. The following accessories are available from Verkada.



**ACC-POE-90W-E**  
Outdoor 90W PoE++ Injector

**Use case:**  
For powering the GC31-E in harsh environments. The GC31-E can be mounted directly on the injector.

[Datasheet](#)



**ACC-POE-90W**  
90W PoE++ Injector

**Use case:**  
For powering the GC31-E when the injector can be placed indoors or within a NEMA enclosure.

[Datasheet](#)



**ACC-ADAP-54V**  
AC/DC Power Adapter

**Use case:**  
Included with the GC31, but can be purchased for use with the GC31-E. Place the adapter indoors or within a NEMA enclosure.

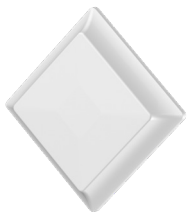
[Datasheet](#)



**ACCX-TAP-DC100-E**  
AC/DC 7-Pin Light Pole Power Tap

**Use case:**  
Power the GC31-E by tapping into a streetlight. The power tap connects directly to AC and provides DC via PoE.

[Datasheet](#)



**ACC-ANT-10**  
Outdoor Directional LTE Antenna

**Use case:**  
Improves signal strength on the GC31-E when pointed toward the correct cell tower.

[Datasheet](#)



# Ordering Information

## Cellular Gateway pricing

Model Number	Description	Cost (MSRP) USD
GC31-HW-AU	GC31 Cellular Gateway, Indoor, Australia Type I Plug	\$899
GC31-HW-EU	GC31 Cellular Gateway, Indoor, Europe Type F Plug	\$899
GC31-HW-NA	GC31 Cellular Gateway, Indoor, North America Type B Plug	\$899
GC31-HW-UK	GC31 Cellular Gateway, Indoor, United Kingdom Type G Plug	\$899
GC31-E-HW	GC31 Cellular Gateway, Outdoor	\$1,299

## Cellular Gateway License pricing

Each cellular gateway requires a Cellular Gateway License, which includes unlimited data for Verkada non-video devices.

LIC-GC-1Y	1-Year Cellular Gateway License, includes unlimited data for Verkada non-video devices	\$299
LIC-GC-3Y	3-Year Cellular Gateway License, includes unlimited data for Verkada non-video devices	\$849
LIC-GC-5Y	5-Year Cellular Gateway License, includes unlimited data for Verkada non-video devices	\$1,349
LIC-GC-10Y	10-Year Cellular Gateway License, includes unlimited data for Verkada non-video devices	\$2,699

## Cellular Gateway Data Plan pricing

Data for Verkada video devices, such as cameras or intercoms, can be purchased through an add-on data plan license. Each data plan license includes unlimited data for one video device.<sup>1</sup>

Customers bringing their own data plan do not need to purchase LIC-GC-1VD-1Y.

LIC-GC-1VD-1Y	1-Year Cellular Gateway Data Plan, includes unlimited data for 1 Verkada video device <sup>1</sup>	\$999
---------------	--	-------

1. The CH52-E Multisensor requires 4 data licenses (1 for each camera head).



# Ordering Information

## Cellular Gateway accessories pricing

Model Number	Description	Cost (MSRP) USD
ACC-ADAP-54V-AU	AC/DC Barrel Jack Power Adapter, 54V, Indoor, Australia Type I Plug	\$89
ACC-ADAP-54V-EU	AC/DC Barrel Jack Power Adapter, 54V, Indoor, Europe Type F Plug	\$89
ACC-ADAP-54V-NA	AC/DC Barrel Jack Power Adapter, 54V, Indoor, North America Type B Plug	\$89
ACC-ADAP-54V-UK	AC/DC Barrel Jack Power Adapter, 54V, Indoor, United Kingdom Type G Plug	\$89
ACC-POE-90W-AU	90W PoE++ (802.3bt Type 4) Injector, GigE, Indoor, Australia Type I Plug	\$169
ACC-POE-90W-EU	90W PoE++ (802.3bt Type 4) Injector, GigE, Indoor, Europe Type F Plug	\$169
ACC-POE-90W-NA	90W PoE++ (802.3bt Type 4) Injector, GigE, Indoor, North America Type B Plug	\$169
ACC-POE-90W-UK	90W PoE++ (802.3bt Type 4) Injector, GigE, Indoor, United Kingdom Type G Plug	\$169
ACC-POE-90W-E-AU	90W PoE++ (802.3bt Type 4) Injector, GigE, Outdoor, Australia Type I Plug	\$299
ACC-POE-90W-E-EU	90W PoE++ (802.3bt Type 4) Injector, GigE, Outdoor, Europe Type F Plug	\$299
ACC-POE-90W-E-NA	90W PoE++ (802.3bt Type 4) Injector, GigE, Outdoor, North America Type B Plug	\$299
ACC-POE-90W-E-UK	90W PoE++ (802.3bt Type 4) Injector, GigE, Outdoor, United Kingdom Type G Plug	\$299
ACC-ANT-10	Directional LTE Antenna, Outdoor, N-Type	\$399
ACCX-TAP-DC100-E	FP AC/DC 7-Pin Power Tap, 100W PoE Output, Outdoor, Model Number: FP287A-180-BEN-A	\$399